































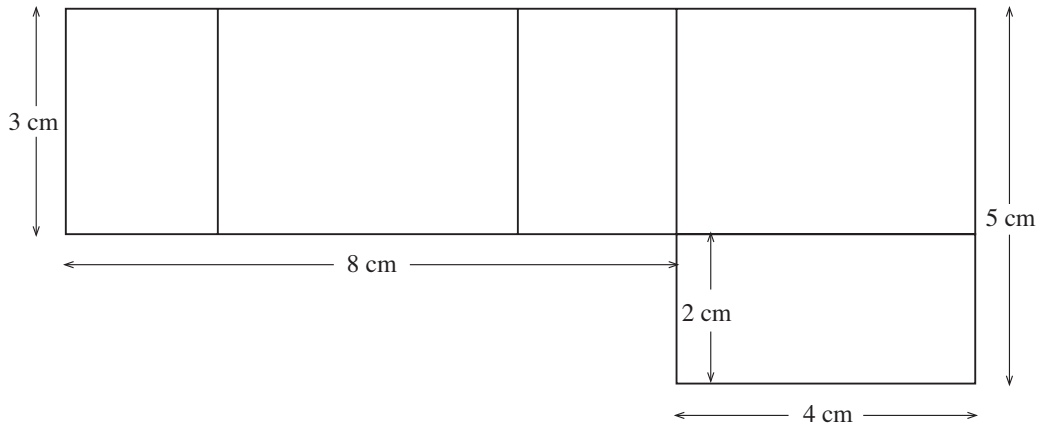








7. The diagram below is the net of a small open box, with no top face.



- (a) Find the perimeter of the net.
- (b) Calculate the area of the net.
- (c) Copy the diagram, and add one more rectangle in a suitable position to change the diagram to the net of a closed box.
- (d) Write down the length, width and height of the box (in any order).
- (e) Calculate the volume of the box.
- (f) Draw an isometric view of the closed box on a grid like the one below.

