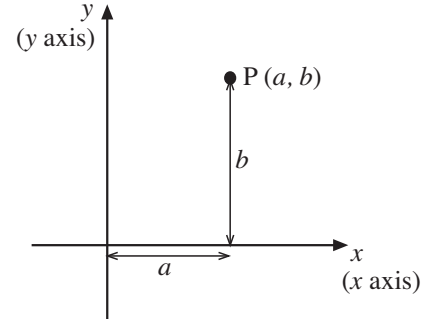


Coordinates

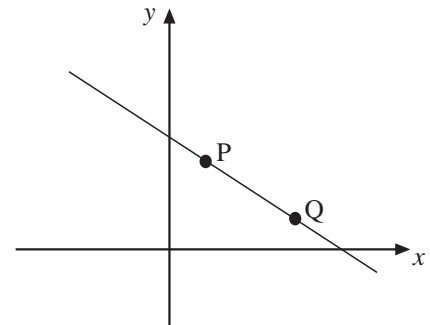
Essential information

Coordinates (x, y) means that the point P with coordinates (a, b) is such that $x = a$, $y = b$.

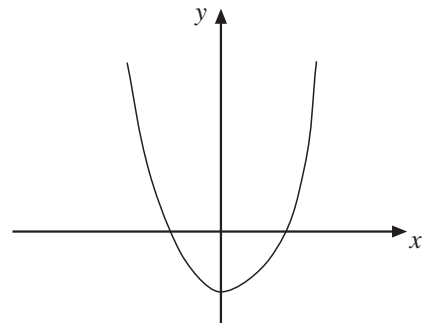
Coordinate axes these are shown on the diagram opposite.



Straight line is defined by any two points on the line P and Q in the diagram opposite.



Curves these are lines that are not straight (see diagram opposite).



Line segment this is any part of a straight line between two points.

Mid-point of line segment This is the point X in the line segment PQ, such that

$$\text{length PX} = \text{length XQ}.$$

The coordinates of X are

$$\left(\frac{a + c}{2}, \frac{b + d}{2} \right)$$

